

H A P P Y F I S H

semi recessed basin



Manufactured by



2.55.0

1 August, 2003

H A P P Y F I S H

semi recessed basin



This basin has a soft flowing bowl design that also incorporates a tap landing to mount a mixer tap. There is also an inset version available (see data sheet 2.07.0 for details).

Code: VT 440

Tap Hole Options

1 tap hole only.

Waste Outlet

32mm overflow plug & waste to be ordered separately (see Technical Data Sheets 2.80.0 for options)

Bowl Capacity

6 litres.

Overflow

Standard - Positioned at the rear of bowl.

Fixing / Brackets

N/A.

Installation Instructions

It is recommended that the basin be installed using a flexible sealant. (Epoxy type glues must not be used. To do so may void product warranty). It is also suggested that the bench-top depth be a minimum of 350mm to assist in the ease of cleaning.

Colour

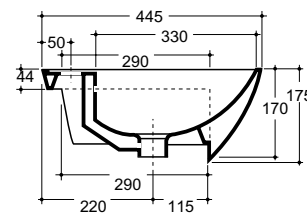
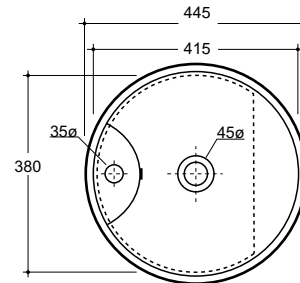
White only.

Packing Details

8kg. Supplied in one carton.



NOTE: The Happy Fish semi recessed basin also complies to AS1428.1/2 for persons with disabilities. It is suitable for use with a single lever basin mixer with a minimum lever length of 160mm.



Manufactured by

