

T W I N S E T 4 3 0



under counter basin



Manufactured by  **FLAMINIA**

2.70.0

1 August, 2003

# TWINSET 430

under counter basin



The 430 Under Bench basin completes the Twinset range by providing a circular bowl with a flat base. It is glazed externally (excluding the top lip) which will also allow for it to be used in an installation where the outer surface is visible.

Code: FL 5057

## Tap Hole Options

No tap holes.

## Waste Outlet

32mm overflow plug & waste to be ordered separately (see Technical Data Sheets 2.80.0 for options)

## Bowl Capacity

7 litres.

## Overflow

Standard.

## Fixing / Brackets

Under Counter Fixing Brackets are included (code: UCB150).

## Installation Instructions

The recommended cut-out diameter is 422mm. Due to slight variances that can occur during production, it is suggested that the benchtop only be cut-out after receiving the basin to ensure an optimum fit.

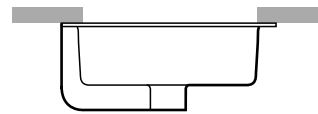
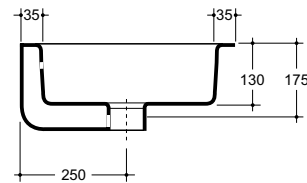
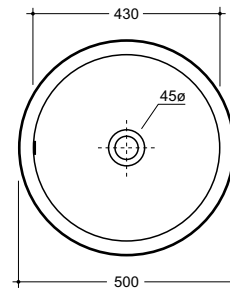
The fixing brackets provided are designed for 2 different applications. For timber bench-tops, screw directly to the underside to hold the basin in place. For granite, marble or stone bench-tops, it is suggested that 4 blocks of timber be glued to the underside surface, then for the brackets to be inverted and screwed to the timber blocks. It is also recommended that the basin be sealed using a flexible sealant. (Epoxy type glues must not be used. To do so may void product warranty).

## Colour

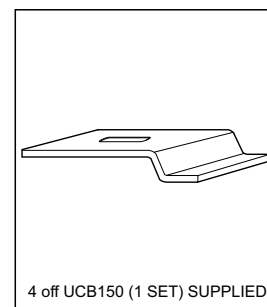
White only.

## Packing Details

10kg. Supplied in one carton.



SUGGESTED BENCHTOP CUT-OUT: 422 $\phi$



4 off UCB150 (1 SET) SUPPLIED

Manufactured by

